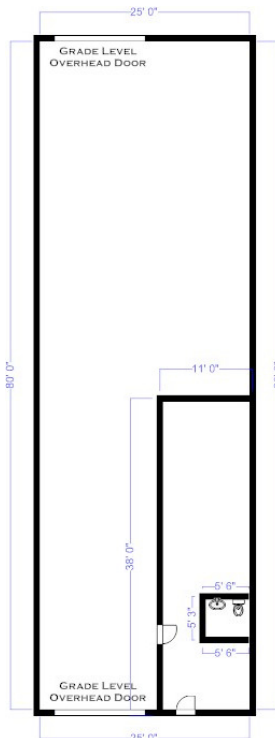


FOR LEASE



411 & 413 TILLERY

OFFICE/WAREHOUSE SPACE FOR LEASE IN EAST AUSTIN. INDUSTRIAL SPACE WITH EASY ACCESS TO HWY 71, 183, AND I-35. AUTOMOTIVE AND BODY SHOPS WELCOME.



- 413 Tillery Street Austin, TX 78702
- 2,000 square feet available
- Roughly 400 square feet of office space
- 2 grade level overhead doors
- \$7.20 per square foot annual rent
- \$2.40 per square foot annual operating expenses

(512) 445-0676



WOODLAND
Property Group

WWW.WOODLANDPROPERTYGROUP.COM

Woodland Property Group
Blair Helgren
Bhelgren@dcwproperties.com
1704 1/2 South Congress Avenue
Austin, Texas 78704

All information pertaining to this property is from sources deemed reliable, however, Owner and Broker have not made an independent investigation of these sources and makes no guarantees, warranties or representations as to the accuracy thereof. The presentation of this real estate information is subject to errors, omissions, change of price, rental or other conditions, prior sale or lease, or withdrawal without notice.